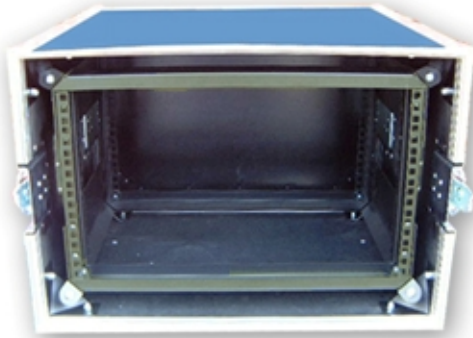
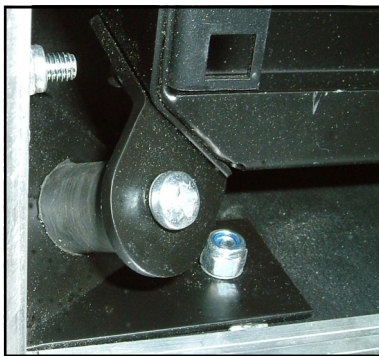


Shock-Mounted 19" Rack Flightcases



Flight Cases to house industry standard 19" rack mounted equipment made from Birch plywood faced with a high pressure laminate / phenolic finish available in many colours. Hardware includes steel ball corners, recessed catches and handles.

The "Ultimate" in protection comes from our Shock Mounted range. Featuring a floating powder coated steel sub-frame allowing complete air circulation, with punched rackstrip front + rear then suspended with 8 rubber Anti-Vibration units with a choice of 50, 90 or 200kg load bearing capacities. These are available in depths from 14ins up to 30ins in 2" increments. We can also double up the 200kg AV mounts to enable carrying of up to 400kgs



Cases of unit size 6 and over include 100mm swivel castors (2 braked) with blue resilex wheels. These are mounted on 18mm Birch ply wheelie boards .

Castors can be mounted on the rear of the case at an extra cost of £41.00 to cover the cost of extra handles.

Prices are based on our standard designs and do not include delivery and VAT.

Please contact the office on **01633 791590** for more details.

UNIT SIZE		SUBFRAME DEPTH 362mm/407mm/462mm/507mm/562mm		SUBFRAME DEPTH 607mm/662mm/707mm/762mm/807mm	
		Black Hexaboard	Coloured Laminate	Black Hexaboard	Coloured Laminate
F192USM/	2	449.00	493.00	466.00	512.00
F193USM/	3	457.00	502.00	475.00	522.00
F194USM/	4	465.00	511.00	482.00	530.00
F196USM/	6	524.00	576.00	569.00	626.00
F198USM/	8	574.00	631.00	597.00	657.00
F1910USM/	10	619.00	681.00	643.00	707.00
F1912USM/	12	635.00	698.00	660.00	726.00
F1914USM/	14	666.00	766.00	692.00	761.00
F1916USM/	16	683.00	751.00	710.00	781.00
F1918USM/	18	700.00	770.00	729.00	802.00
F1920USM/	20	718.00	789.00	745.00	820.00
F1922USM/	22	736.00	810.00	765.00	841.00
F1924USM/	24	768.00	845.00	799.00	879.00

These Prices are based on using 50kg, 90kg or 200kg anti-vibration shock mounts. For a weight bearing of 400kgs, please add £42.00 per case.

June 2021



Rack Accessories

ONLY AVAILABLE WHEN ORDERING CASES



BLANK STEEL RACK PANELS

R1285/1UK 1 unit - 5.52
R1285/2UK 2 unit - 8.32
R1285/3UK 3 unit - 11.42
R1285/4UK 4 unit - 13.16



RACK FIXINGS

FIX20 Complete Set of 20 - 8.80
FIX50 Complete Set of 50 - 22.00



SHELF SUPPORTS

(to fit standard + foam suspended cases)
R0855K - 9.64 per pair



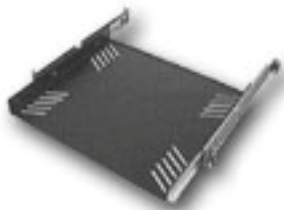
(to fit shock-mounted cases)

R8840/14 (362/442mm subframes) - 11.04 per pair
R8840/18 (462/507mm subframes) - 13.20 per pair
R8840/22 (562/607mm subframes) - 16.12 per pair
R8840/26 (662/707mm subframes) - 19.68 per pair
R8840/30 (762/807mm subframes) - 23.04 per pair



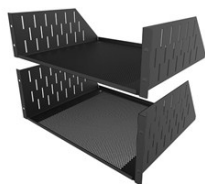
STEEL DRAWERS

R1292K 2u 367mm deep - 99.00
R1293K 3u 367mm deep - 104.00
R1294K 4u 367mm deep - 112.00
R1295K 5u 367mm deep - 119.00
R1296K 6u 367mm deep - 125.00
R1292K/18 2u 455mm deep - 112.00
R1293K/18 3u 455mm deep - 119.00
R1294K/18 4u 455mm deep - 125.00
R1295K/18 5u 455mm deep - 125.00
R1296K/18 6u 455mm deep - 128.98



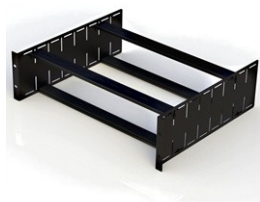
TRAYS

R1290/1U sliding rack tray 400mm deep - 52.23
R1290-600/1UK sliding rack tray 600mm deep - 59.97



RACK SHELVES

R1194/2UK 2U - 29.73
R1194/3UK 3U - 31.31
R1194/4UK 4U - 34.46



RACK CLAMPS

R1288/2UK 2u shelf assembly - 66.59
R1288/3UK 3u shelf assembly - 70.26
R1288/4UK 4u shelf assembly - 74.03
R1288/5UK 5u shelf assembly - 77.67
R1288/6UK 6u shelf assembly - 81.36



CLAMPING RACK SHELVES

R1297/2UK 2u – 34.19

R1297/3UK 3u – 36.03

R1297/4UK 4u - 39.65



R1288/CBK Clamp Bar - 12.45



R1292-KBT 2u Computer Keyboard Tray - 113.58



LOCKABLE RACK VOLTS

R1380/2UK 2u - 86.10

R1380/3UK 3u - 91.50

R1380/4UK 4u - 97.40



RACK DOORS

R1298/6UK 6u - 52.85

R1298/10UK 10u - 57.38

R1298/14UK 14u - 61.85



R1303 3u - 62.76

R1304 4u - 62.99

R1305 5u - 64.47

R1306 6u - 66.26



6 WAY RACK MOUNTING DISTRIBUTION UNIT

PDU-UK-6 UK Version – 55.05

PDU-EU-6 Europe Version—55.05



REMOVABLE CASE TROLLEYS

H4512 235mm wheel base - 39.83

H4515 335mm wheel base – 39.83



REPLACEMENT AV SHOCKMOUNTS

R8860/50 set of 8 x 50kg — 21.78

R8860/90 set of 8 x 90kg - 21.78

R8860/200 set of 8 x 200kg - 23.86