

**FULL TOUR SPEC.**

# 19" Rack Flightcases



**19" PROFESSIONAL FLIGHT CASES MADE TO ORDER IN A RANGE OF COLOURS AND FINISHES**

Flight Cases to house industry standard 19" rack mounted equipment made from Birch plywood faced with a phenolic GRP resin / high pressure laminate or lightweight Astraboard available in many colours. Featuring front and rear removable doors with zinc plated hardware which includes steel ball corners, butterfly catches and sprung handles in recessed dishes. Available Silk Screen Printed if required. Various accessories are available on request.

There are 3 types of 19" Rack Flightcases available from Dragon Cases. These are:

Standard.

Foam-Suspended.

Shock-Mounted.



# Standard 19" Rack Flightcases



Flight Cases to house industry standard 19" rack mounted equipment made from Birch plywood faced with a high pressure laminate or ultra light weight Astraboard available in many colours. Hardware includes steel ball corners, recessed catches and handles. Punched rack rails fitted 20mm off the front and rear edges. Standard depth of body of case is 450mm

Cases of unit size 10 and over include 100mm swivel castors (2 braked) with blue resilex wheels. These are mounted on 18mm Birch ply wheelie boards and are available all braked for a small extra cost. Castors can be

Top loading (Mixer Rack) cases are also available.

Castors can be mounted on the rear of the case if required.

Please contact the office on **01633 791590** or visit our website at <https://www.dragoncases.co.uk/products/rack-cases/standard-19-rack-flight-cases/> for more details.

	UNIT SIZE
F192USTD	2
F193USTD	3
F194USTD	4
F196USTD	6
F198USTD	8
F1910USTD	10
F1912USTD	12
F1914USTD	14
F1916USTD	16
F1918USTD	18
F1920USTD	20
F1922USTD	22
F1924USTD	24

July 2022



# Foam-Suspended 19" Rack Flightcases



Our foam suspended rack case range offers extra protection to the equipment by means of plywood rack enclosures capped with aluminium extrusion and suspended in 25mm high density Plastazote foam. Rack Rails are fitted 20mm off the front and rear edges.

Normal depth of enclosure is 450mm.

Cases of unit height 10 and over include swivel castors with 100mm blue resilex wheels (2 braked). These are mounted on 18mm Birch Ply wheelieboards. Castors can be fitted on unit sizes 8 and under for an extra cost of £45.00.

Castors can be mounted on the rear of the case if required.

All cases come supplied with 2 sets of fixings for every unit size. (i.e. 12 screws, 12 cup washers and 12 cage nuts for 6 unit case) Extra fixings are available if required.

Please contact the office on **01633 791590** or visit our website at <https://www.dragoncases.co.uk/products/rack-cases/foam-suspended-19-rack-cases/> for more information.



	UNIT SIZE
<b>F192UFS</b>	2
<b>F193UFS</b>	3
<b>F194UFS</b>	4
<b>F196UFS</b>	6
<b>F198UFS</b>	8
<b>F1910UFS</b>	10
<b>F1912UFS</b>	12
<b>F1914UFS</b>	14
<b>F1916UFS</b>	16
<b>F1918UFS</b>	18
<b>F1920UFS</b>	20
<b>F1922UFS</b>	22
<b>F1924UFS</b>	24

July 2022

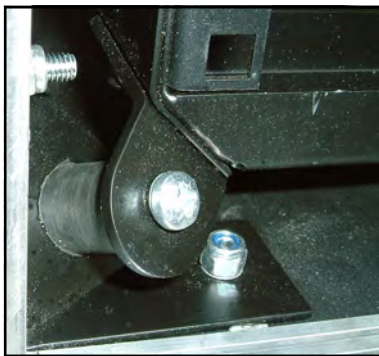


# Shock-Mounted 19" Rack Flightcases



Flight Cases to house industry standard 19" rack mounted equipment made from Birch plywood faced with a high pressure laminate / phenolic finish available in many colours. Hardware includes steel ball corners, recessed catches and handles.

The "Ultimate" in protection comes from our Shock Mounted range. Featuring a floating powder coated steel sub-frame allowing complete air circulation, with punched double rack rails front + rear then suspended with 8 rubber Anti-Vibration units with a choice of 50, 90 or 200kg load bearing capacities. These are available in depths from 14ins up to 30ins in 2" increments. We can also double up the 200kg AV mounts to enable carrying of up to 400kgs



Cases of unit size 6 and over include 100mm swivel castors (2 braked) with blue resilex wheels. These are mounted on 18mm Birch ply wheelie boards .

Castors can be mounted on the rear of the case at an extra cost.

Please contact the office on **01633 791590** or visit <https://www.dragoncases.co.uk/products/rack-cases/shock-mounted-19-server-rack-cases/> for more details.

## SUBFRAME DEPTHS

362mm/407mm/462mm/507mm/562mm/607mm/662mm/707mm/762mm/807mm

## UNIT HEIGHT

F192USM/	2
F193USM/	3
F194USM/	4
F196USM/	6
F198USM/	8
F1910USM/	10
F1912USM/	12
F1914USM/	14
F1916USM/	16
F1918USM/	18
F1920USM/	20
F1922USM/	22
F1924USM/	24

July 2022





# THE RACK PACK

MODULAR INTERCHANGEABLE 19" RACK FLIGHTCASE SYSTEM



**F6767 - Hand Case**  
Takes 1x 3u sleeve or 1x 3u tray.



**F6896 - Small System Case**  
Takes 2x 3u sleeves/trays.  
1x 6u sleeve.



**F6753 - Medium System Case**  
Takes 1 x 10u sleeve/tray.  
1x 6u sleeve + 1x 3u sleeve/tray.  
3x 3u sleeves/trays.  
2x 4u sleeves.



**F6754 - Large System Case**  
Takes 1x 14u sleeve.  
1x 10u sleeve/tray + 1x 3u sleeve/tray.  
2x 6u sleeves.  
4x 3u sleeves.  
2x 4u sleeves + 1x 3u sleeve/tray



**F6755 - Extra Large System Case**  
Takes 1x 17u sleeve.  
1x 10u sleeve/tray + 2x 3u sleeves/trays.  
1x 10u sleeve/tray + 1x 6u sleeve.  
2x 6u sleeves + 1x 3u sleeve/tray.  
5x 3u sleeves/trays.  
2x 4u sleeves + 2x 3u sleeves/trays.



**F11977 - 2u Sleeve**



**F6748 - 3u Sleeve**



**F7054 - 4u Sleeve**



**F6749 - 6u Sleeve**



**F6750 - 10u Sleeve**



**F6751 - 14u Sleeve**



**F6752 - 17u Sleeve**



**F6746 - 3u Tray**



**F6747 - 10u Tray**



# Rack Pack Interchangeable 19" Rack System from Dragon Cases

Manufactured to order from standard designs in a choice of colours and finishes.

Designed as a modular system to enable easy swap over of standard 19" rack equipment eliminating the need for large quantities of individual flight cases.

Manufactured in the UK at our 16000 square foot factory in the East Midlands.

## Sleeves and Trays

Birch Plywood rack sleeves and trays coated black with front, rear and intermediate rack strips in sleeves (front and rear only on 2u + 3u).

Intermediate rack strips positioned to accommodate standard shelf supports with 267mm centres.

550 mm standard rack depth.

Rubber feet on base with matching wells on top of sleeves to enable easy stacking.

Recessed flip handles housed in to sides.

## Cases

Laminate or Phenol faced Birch Plywood with aluminium extrusions and zinc plated steel hardware.

Interior surfaces lined and padded with high density Plastazote foam.

100mm swivel castors, 2 with brakes + Recessed castor dishes for safe stacking.

5x7 tour label dish.

Recessed butterfly catches and sprung flip handles.

Fits 4 across a standard Artic wagon width.

F6767	Hand System Flightcase
F6896	Small System Flightcase
F6753	Med System Flightcase
F6754	Large System Flightcase
F6755	Extra Large System Flightcase

F11977	2u ply Sleeve
F6748	3u Ply Sleeve
F7054	4u Ply Sleeve
F6749	6u Ply Sleeve
F6750	10u Ply Sleeve
F6751	14u Ply Sleeve
F6752	17u Ply Sleeve
F6746	3u Ply Tray
F6985	6u Ply Tray
F6747	10u Ply Tray

July 2022



www.dragoncases.co.uk

t: 01633 791590

e: sales@dragoncases.co.uk



# Rack Accessories

ONLY AVAILABLE WHEN ORDERING CASES



## BLANK STEEL RACK PANELS

R1285/1UK 1 unit  
R1285/2UK 2 unit  
R1285/3UK 3 unit  
R1285/4UK 4 unit



## RACK FIXINGS

FIX20 Complete Set of 20  
FIX50 Complete Set of 50



## SHELF SUPPORTS

(to fit standard + foam suspended cases)  
R0855K - 9.64 per pair



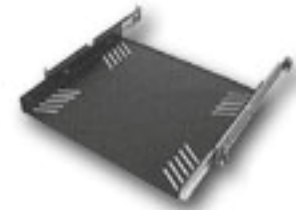
## (to fit shock-mounted cases)

R8840/14 (362/442mm subframes)  
R8840/18 (462/507mm subframes)  
R8840/22 (562/607mm subframes)  
R8840/26 (662/707mm subframes)  
R8840/30 (762/807mm subframes)



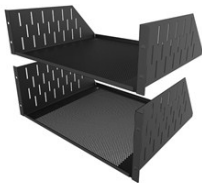
## STEEL DRAWERS

R1292K 2u 367mm deep  
R1293K 3u 367mm deep  
R1294K 4u 367mm deep  
R1295K 5u 367mm deep  
R1296K 6u 367mm deep  
R1292K/18 2u 455mm deep  
R1293K/18 3u 455mm deep  
R1294K/18 4u 455mm deep  
R1295K/18 5u 455mm deep  
R1296K/18 6u 455mm deep



## TRAYS

R1290/1U sliding rack tray 400mm deep  
R1290-600/1UK sliding rack tray 600mm deep



## RACK SHELVES

R1194/2UK 2U  
R1194/3UK 3U  
R1194/4UK 4U



## RACK CLAMPS

R1288/2UK 2u shelf assembly  
R1288/3UK 3u shelf assembly  
R1288/4UK 4u shelf assembly  
R1288/5UK 5u shelf assembly  
R1288/6UK 6u shelf assembly



### **CLAMPING RACK SHELVES**

R1297/2UK  
R1297/3UK  
R1297/4UK



R1288/CBK Clamp Bar



R1292-KBT 2u Computer Keyboard Tray



### **LOCKABLE RACK VOLTS**

R1380/2UK  
R1380/3UK  
R1380/4UK



### **RACK DOORS**

R1298/6UK  
R1298/10UK  
R1298/14UK



R1303 3u  
R1304 4u  
R1305 5u  
R1306 6u



### **6 WAY RACK MOUNTING DISTRIBUTION UNIT**

PDU-UK-6 UK Version  
PDU-EU-6 Europe Version



### **REMOVABLE CASE TROLLEYS**

H4512 235mm wheel base  
H4515 335mm wheel base



### **REPLACEMENT AV SHOCKMOUNTS**

R8860/50 set of 8 x 50kg  
R8860/90 set of 8 x 90kg  
R8860/200 set of 8 x 200kg