

FULL TOUR SPEC.

19" Rack Flightcases



19" PROFESSIONAL FLIGHT CASES MADE TO ORDER IN A RANGE OF COLOURS AND FINISHES

Flight Cases to house industry standard 19" rack mounted equipment made from Birch plywood faced with a phenolic GRP resin / high pressure laminate or lightweight Astraboard available in many colours. Featuring front and rear removable doors with zinc plated hardware which includes steel ball corners, butterfly catches and sprung handles in recessed dishes. Available Silk Screen Printed if required. Various accessories are available on request.

There are 3 types of 19" Rack Flightcases available from Dragon Cases. These are:

Standard.

Foam-Suspended.

Shock-Mounted.



Standard 19" Rack Flightcases



Flight Cases to house industry standard 19" rack mounted equipment made from Birch plywood faced with a high pressure laminate or ultra light weight Astraboard available in many colours. Hardware includes steel ball corners, recessed catches and handles. Punched rack strip is fitted 20mm off the front and is also available at the rear for a small extra charge. Standard depth of body of case is 450mm

Cases of unit size 10 and over include 100mm swivel castors with blue resilex wheels. These are mounted on 18mm Birch ply wheelie boards and are available braked for a small extra cost. Castors can be fitted on unit sizes 8 and under for an extra cost of £48.00.

Top loading (Mixer Rack) cases can be supplied at an extra cost of £84.00.

Castors can be mounted on the rear of the case at an extra cost of £35.00 to cover the cost of extra handles.

Prices are based on our standard designs (drawings available on request) and do not include delivery and VAT.

Please contact the office on **01633 791590** for more details.

	UNIT SIZE	BLACK HEXABOARD	COLOURED LAMINATE
F192USTD	2	239.00	263.00
F193USTD	3	245.00	270.00
F194USTD	4	269.00	296.00
F196USTD	6	300.00	330.00
F198USTD	8	319.00	351.00
F1910USTD	10	383.00	421.00
F1912USTD	12	399.00	439.00
F1914USTD	14	478.00	526.00
F1916USTD	16	495.00	544.00
F1918USTD	18	508.00	559.00
F1920USTD	20	524.00	577.00
F1922USTD	22	539.00	593.00
F1924USTD	24	557.00	612.00

June 2021



Foam-Suspended 19" Rack Flightcases



Our foam suspended rack case range offers extra protection to the equipment by means of plywood rack enclosures capped with aluminium extrusion and suspended in 25mm high density Plastazote foam. Rackstrip is fitted 20mm off the front edge and can also be fitted at the rear if required.

Normal depth of enclosure is 450mm. Cases of unit height 10 and over include swivel castors with 100mm blue resilex wheels (2 braked). These are mounted on 18mm Birch Ply wheelieboards. Castors can be fitted on unit sizes 8 and under for an extra cost of £45.00.

Castors can be mounted on the rear of the case at an extra cost of £35.00 to cover the cost of extra handles.

All cases come supplied with 2 sets of fixings for every unit size. (i.e. 12 screws, 12 cup washers and 12 cage nuts for 6 unit case) Ex-

	UNIT SIZE	BLACK HEXABOARD	COLOURED LAMINATE
F192UFS	2	352.00	387.00
F193UFS	3	368.00	405.00
F194UFS	4	384.00	422.00
F196UFS	6	426.00	469.00
F198UFS	8	446.00	491.00
F1910UFS	10	605.00	666.00
F1912UFS	12	643.00	707.00
F1914UFS	14	661.00	727.00
F1916UFS	16	670.00	737.00
F1918UFS	18	683.00	751.00
F1920UFS	20	700.00	770.00
F1922UFS	22	728.00	801.00
F1924UFS	24	622.00	821.00



June 2021

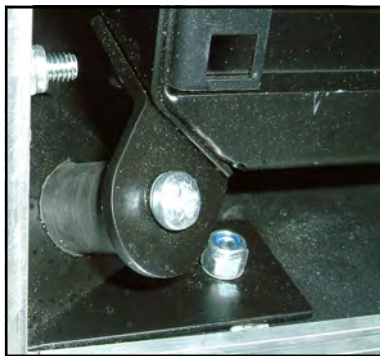


Shock-Mounted 19" Rack Flightcases



Flight Cases to house industry standard 19" rack mounted equipment made from Birch plywood faced with a high pressure laminate / phenolic finish available in many colours. Hardware includes steel ball corners, recessed catches and handles.

The "Ultimate" in protection comes from our Shock Mounted range. Featuring a floating powder coated steel sub-frame allowing complete air circulation, with punched rackstrip front + rear then suspended with 8 rubber Anti-Vibration units with a choice of 50, 90 or 200kg load bearing capacities. These are available in depths from 14ins up to 30ins in 2" increments. We can also double up the 200kg AV mounts to enable carrying of up to 400kgs



Cases of unit size 6 and over include 100mm swivel castors (2 braked) with blue resilex wheels. These are mounted on 18mm Birch ply wheelie boards .

Castors can be mounted on the rear of the case at an extra cost of £41.00 to cover the cost of extra handles.

Prices are based on our standard designs and do not include delivery and VAT.

Please contact the office on **01633 791590** for more details.

UNIT SIZE		SUBFRAME DEPTH 362mm/407mm/462mm/507mm/562mm		SUBFRAME DEPTH 607mm/662mm/707mm/762mm/807mm	
		Black Hexaboard	Coloured Laminate	Black Hexaboard	Coloured Laminate
F192USM/	2	449.00	493.00	466.00	512.00
F193USM/	3	457.00	502.00	475.00	522.00
F194USM/	4	465.00	511.00	482.00	530.00
F196USM/	6	524.00	576.00	569.00	626.00
F198USM/	8	574.00	631.00	597.00	657.00
F1910USM/	10	619.00	681.00	643.00	707.00
F1912USM/	12	635.00	698.00	660.00	726.00
F1914USM/	14	666.00	766.00	692.00	761.00
F1916USM/	16	683.00	751.00	710.00	781.00
F1918USM/	18	700.00	770.00	729.00	802.00
F1920USM/	20	718.00	789.00	745.00	820.00
F1922USM/	22	736.00	810.00	765.00	841.00
F1924USM/	24	768.00	845.00	799.00	879.00

These Prices are based on using 50kg, 90kg or 200kg anti-vibration shock mounts. For a weight bearing of 400kgs, please add £42.00 per case.

June 2021



THE RACK PACK

MODULAR INTERCHANGEABLE 19" RACK FLIGHTCASE SYSTEM



F6767 - Hand Case
Takes 1x 3u sleeve or 1x 3u tray.



F6896 - Small System Case
Takes 2x 3u sleeves/trays.
1x 6u sleeve.



F6753 - Medium System Case
Takes 1 x 10u sleeve/tray.
1x 6u sleeve + 1x 3u sleeve/tray.
3x 3u sleeves/trays.
2x 4u sleeves.



F6754 - Large System Case
Takes 1x 14u sleeve.
1x 10u sleeve/tray + 1x 3u sleeve/tray.
2x 6u sleeves.
4x 3u sleeves.
2x 4u sleeves + 1x 3u sleeve/tray



F6755 - Extra Large System Case
Takes 1x 17u sleeve.
1x 10u sleeve/tray + 2x 3u sleeves/trays.
1x 10u sleeve/tray + 1x 6u sleeve.
2x 6u sleeves + 1x 3u sleeve/tray.
5x 3u sleeves/trays.
2x 4u sleeves + 2x 3u sleeves/trays.



F11977 - 2u Sleeve



F6748 - 3u Sleeve



F7054 - 4u Sleeve



F6749 - 6u Sleeve



F6750 - 10u Sleeve



F6751 - 14u Sleeve



F6752 - 17u Sleeve



F6746 - 3u Tray



F6747 - 10u Tray

Rack Pack Interchangeable 19" Rack System from Dragon Cases

Manufactured to order from standard designs in a choice of colours and finishes.

Designed as a modular system to enable easy swap over of standard 19" rack equipment eliminating the need for large quantities of individual flight cases.

Manufactured in the UK at our 16000 square foot factory in the East Midlands.

Sleeves and Trays

Birch Plywood rack sleeves and trays coated black with front, rear and intermediate rack strips in sleeves (front and rear only on 2u + 3u).

Intermediate rack strips positioned to accommodate standard shelf supports with 267mm centres.

550 mm standard rack depth.

Rubber feet on base with matching wells on top of sleeves to enable easy stacking.

Recessed flip handles housed in to sides.

Cases

Laminate or Phenol faced Birch Plywood with aluminium extrusions and zinc plated steel hardware.

Interior surfaces lined and padded with high density Plastazote foam.

100mm swivel castors, 2 with brakes +Recessed castor dishes for safe stacking.

5x7 tour label dish.

Recessed butterfly catches and sprung flip handles.

Fits 4 across a standard Artic wagon width.

F6767	Hand System Flightcase	273.00
F6896	Small System Flightcase	458.00
F6753	Med System Flightcase	483.00
F6754	Large System Flightcase	503.00
F6755	Extra Large System Flightcase	520.00
F11977	2u ply Sleeve	72.00
F6748	3u Ply Sleeve	72.00
F7054	4u Ply Sleeve	78.00
F6749	6u Ply Sleeve	85.00
F6750	10u Ply Sleeve	104.00
F6751	14u Ply Sleeve	121.00
F6752	17u Ply Sleeve	136.00
F6746	3u Ply Tray	55.00
F6985	6u Ply Tray	75.00
F6747	10u Ply Tray	104.00

June 2021



www.dragoncases.co.uk

t: 01633 791590

e: sales@dragoncases.co.uk



Rack Accessories

ONLY AVAILABLE WHEN ORDERING CASES



BLANK STEEL RACK PANELS

R1285/1UK 1 unit - 5.52
R1285/2UK 2 unit - 8.32
R1285/3UK 3 unit - 11.42
R1285/4UK 4 unit - 13.16



RACK FIXINGS

FIX20 Complete Set of 20 - 8.80
FIX50 Complete Set of 50 - 22.00



SHELF SUPPORTS

(to fit standard + foam suspended cases)
R0855K - 9.64 per pair



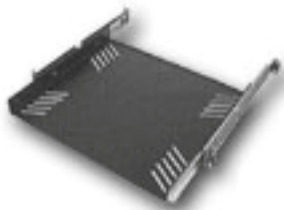
(to fit shock-mounted cases)

R8840/14 (362/442mm subframes) - 11.04 per pair
R8840/18 (462/507mm subframes) - 13.20 per pair
R8840/22 (562/607mm subframes) - 16.12 per pair
R8840/26 (662/707mm subframes) - 19.68 per pair
R8840/30 (762/807mm subframes) - 23.04 per pair



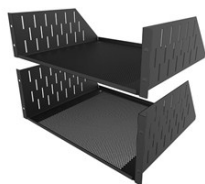
STEEL DRAWERS

R1292K 2u 367mm deep - 99.00
R1293K 3u 367mm deep - 104.00
R1294K 4u 367mm deep - 112.00
R1295K 5u 367mm deep - 119.00
R1296K 6u 367mm deep - 125.00
R1292K/18 2u 455mm deep - 112.00
R1293K/18 3u 455mm deep - 119.00
R1294K/18 4u 455mm deep - 125.00
R1295K/18 5u 455mm deep - 125.00
R1296K/18 6u 455mm deep - 128.98



TRAYS

R1290/1U sliding rack tray 400mm deep - 52.23
R1290-600/1UK sliding rack tray 600mm deep - 59.97



RACK SHELVES

R1194/2UK 2U - 29.73
R1194/3UK 3U - 31.31
R1194/4UK 4U - 34.46



RACK CLAMPS

R1288/2UK 2u shelf assembly - 66.59
R1288/3UK 3u shelf assembly - 70.26
R1288/4UK 4u shelf assembly - 74.03
R1288/5UK 5u shelf assembly - 77.67
R1288/6UK 6u shelf assembly - 81.36



CLAMPING RACK SHELVES

R1297/2UK 2u – 34.19

R1297/3UK 3u – 36.03

R1297/4UK 4u - 39.65



R1288/CBK Clamp Bar - 12.45



R1292-KBT 2u Computer Keyboard Tray - 113.58



LOCKABLE RACK VOLTS

R1380/2UK 2u - 86.10

R1380/3UK 3u - 91.50

R1380/4UK 4u - 97.40

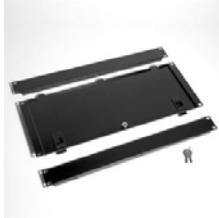


RACK DOORS

R1298/6UK 6u - 52.85

R1298/10UK 10u - 57.38

R1298/14UK 14u - 61.85



R1303 3u - 62.76

R1304 4u - 62.99

R1305 5u - 64.47

R1306 6u - 66.26



6 WAY RACK MOUNTING DISTRIBUTION UNIT

PDU-UK-6 UK Version – 55.05

PDU-EU-6 Europe Version—55.05



REMOVABLE CASE TROLLEYS

H4512 235mm wheel base - 39.83

H4515 335mm wheel base – 39.83



REPLACEMENT AV SHOCKMOUNTS

R8860/50 set of 8 x 50kg — 21.78

R8860/90 set of 8 x 90kg - 21.78

R8860/200 set of 8 x 200kg - 23.86

Silk Screen-Printing

Our in-house screen printing facility can add your corporate logo to flight cases, poly cases + padded bags.

Each colour requires it's own screen and printing operation.

Screen/Origination charge per colour - 65.00 (1 off payment)

1 POSITION PRINTING PER COLOUR

Qty:	1-25	26-99	100+
	min. charge		
	50.00 total	2.00ea	1.80ea

The above prices are for single colour only. If 2 or 3 colours are required, multiply prices accordingly.

These prices only apply to ink colours that are held in stock. Matching Pantone colours will incur an extra cost of £40 per colour.

The appropriate "camera ready" artwork must be supplied preferably in vector /.eps format.

Images must be separated when multi-coloured logos are required. Failing this, extra charges will be applied.

It is not possible to print graduated colours (colours that fade from one to another)

Prices do not include Vat.

