

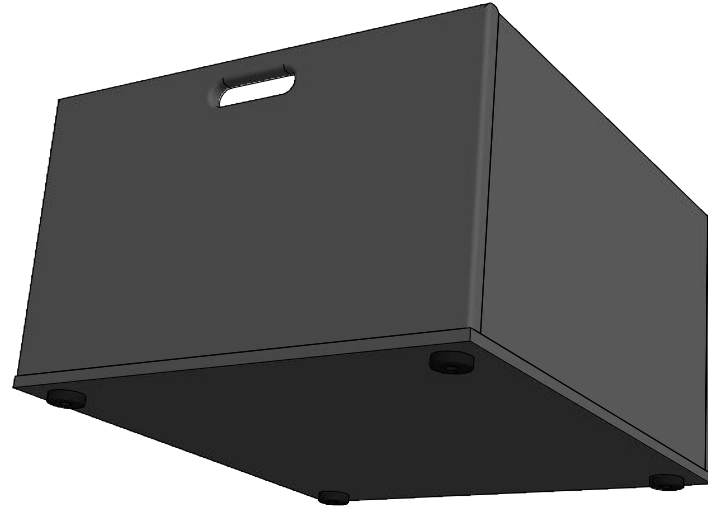
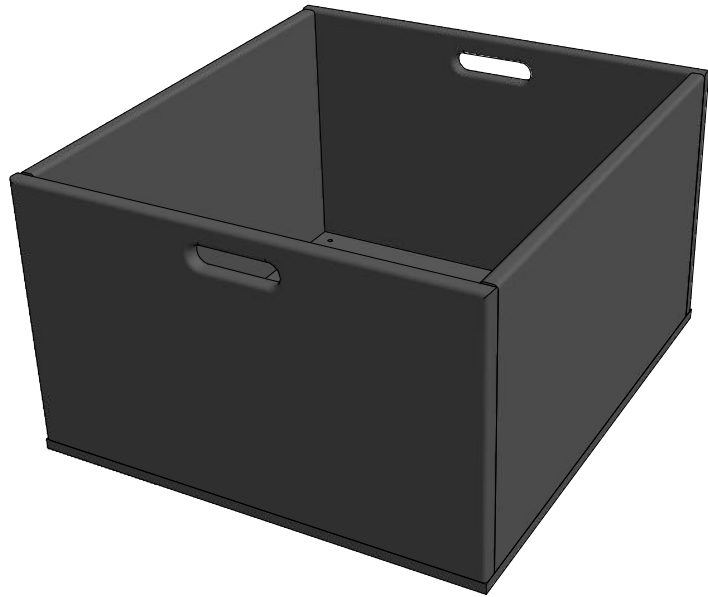



| | | | | | | | | | | | | | | | | |
|-------------|-------------------|-----------|------|----------|----|-----------------|------------|-----------------------|--|-------------------|--------------------------|---|--|-------------------------------|--|---|
| Drawing no: | F6985 | Issue No: | 1 | Sheet: | 1 | Wall Thickness: | 18mm | Wall Colour/Material: | 18mm sides, 12mm base birch ply painted black | Hardware Details: | 38mm x 10mm rubber feet. | Specifications: | 1. Joints to be glued, screwed and holes filled. 2. All edges bull nosed, including hand holes. 3. 18mm sides, 12mm base | ALL DIMENSIONS IN MILLIMETRES | THIS DRAWING IS COPYRIGHTED BY DRAGON CASES. IT MUST NOT BE COPIED OR DISCLOSED WITHOUT CONSENT OF THE OWNER |  DRAGON CASES in partnership with Nomad PLC tel: 01633 791590 fax: 01633 791531 |
| Title: | 6u Rack Pack Tray | Drawn by: | J.B. | Company: | XX | Date: | 16/12/2009 | | | | |  3rd ANGLE PROJECTION DO NOT SCALE | | | | |



| | | | | | | | | | | | | | | | | |
|-------------|-------------------|-----------|-----------|--------|----------|-----------------|------|-----------------------|--|-------------------|--------------------------|-----------------|--|-------------------------------|---|---|
| Drawing no: | F6985 | Issue No: | 1 | Sheet: | 1 | Wall Thickness: | 18mm | Wall Colour/Material: | 18mm sides, 12mm base birch ply painted black | Hardware Details: | 38mm x 10mm rubber feet. | Specifications: | 1. Joints to be glued, screwed and holes filled. 2. All edges bull nosed, including hand holes. 3. 18mm sides, 12mm base | ALL DIMENSIONS IN MILLIMETRES | THIS DRAWING IS COPYRIGHTED BY DRAGON CASES. IT MUST NOT BE COPIED OR DISCLOSED WITHOUT CONSENT OF THE OWNER |  DRAGON CASES in partnership with Nomad PLC tel: 01633 791590 fax: 01633 791531 |
| Title: | 6u Rack Pack Tray | | Drawn by: | J.B. | Company: | XX | | |  3rd ANGLE PROJECTION | DO NOT SCALE | | | | | | |
| Date: | 16/12/09 | | | | | | | | | | | | | | | |