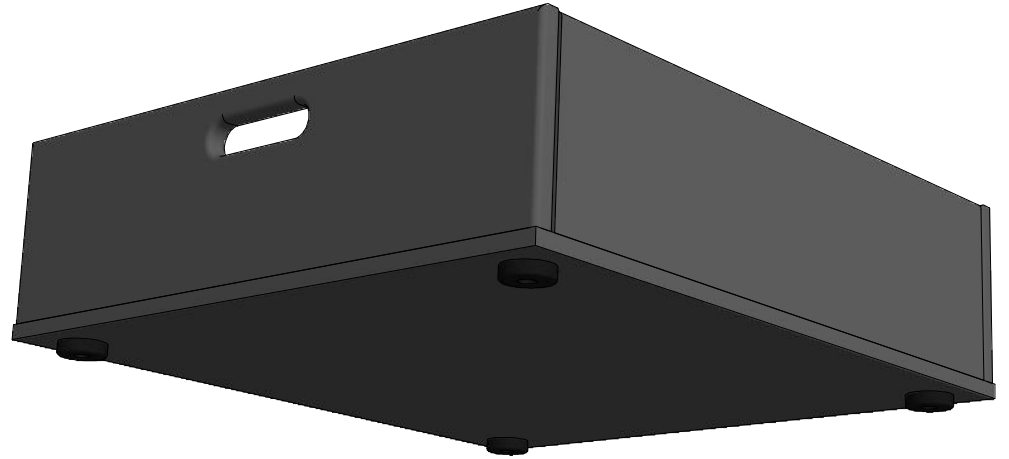

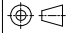


Drawing no:	F6746	Issue No:	1	Sheet:	1	Wall Thickness:	18mm	Wall Colour/Material:	18mm sides, 12mm base birch ply painted black	Hardware Details:	38mm x 10mm rubber feet.	Specifications:	1. Joints to be glued, screwed and holes filled. 2. All edges bull nosed, including hand holes. 3. 18mm sides, 12mm base	ALL DIMENSIONS IN MILLIMETRES	THIS DRAWING IS COPYRIGHTED BY DRAGON CASES. IT MUST NOT BE COPIED OR DISCLOSED WITHOUT CONSENT OF THE OWNER	 DRAGON CASES in partnership with Nomad PLC tel: 01633 791590 fax: 01633 791531
Title:	3u Rack Pack Tray	Drawn by:	J.B.	Company:	XX	Date:	28/08/2009					3-4 ANGLE PROJECTION	DO NOT SCALE			



Drawing no: F6746		Issue No: 1	Sheet: 1	Wall Thickness: 18mm	Wall Colour/Material: 18mm sides, 12mm base birch ply painted black	Hardware Details: 38mm x 10mm rubber feet.	Specifications: 1. Joints to be glued, screwed and holes filled. 2. All edges bull nosed, including hand holes. 3. 18mm sides, 12mm base	ALL DIMENSIONS IN MILLIMETRES	THIS DRAWING IS COPYRIGHTED BY DRAGON CASES. IT MUST NOT BE COPIED OR DISCLOSED WITHOUT CONSENT OF THE OWNER	 DRAGON CASES in partnership with Nomad PLC tel: 01633 791590 fax: 01633 791531
Title: 3u Rack Pack Tray			Drawn by: J.B.	Company: XX			 3rd ANGLE PROJECTION	DO NOT SCALE		