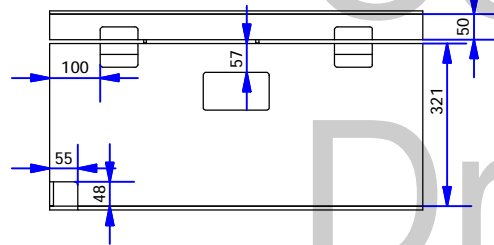
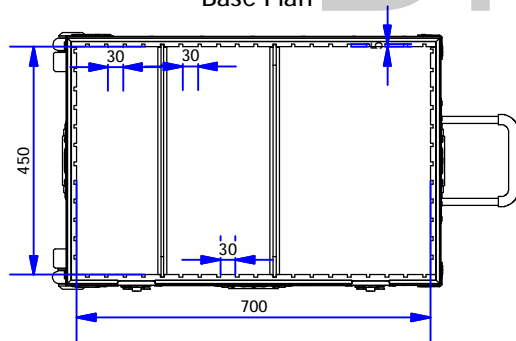


Panel & Interior Details

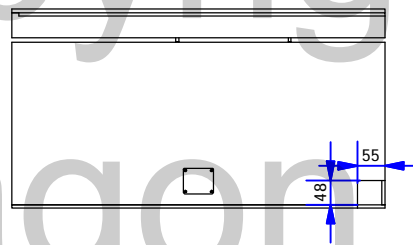
FRONT



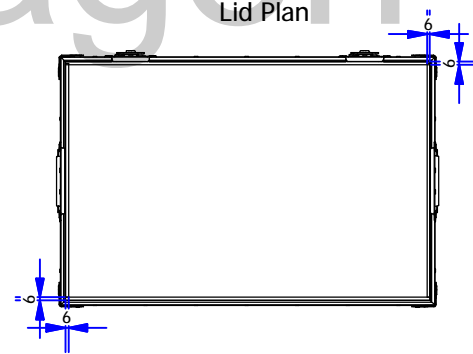
Base Plan



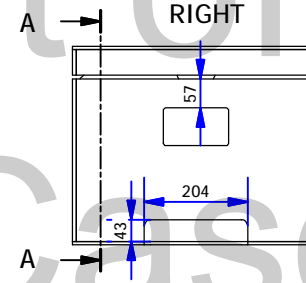
BACK



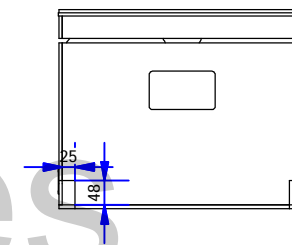
Lid Plan



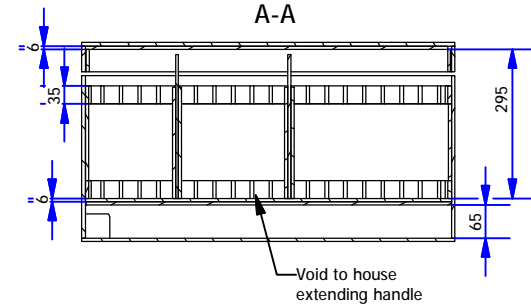
RIGHT



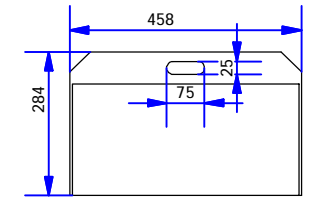
LEFT




A-A



Moveable Partition



External Dimensions (excluding hardware): 741L x 491W x 396H  
Estimated Weight - 11.8kgs

Drawing no: <b>FRFT4</b>	Issue/Sheet <b>1 / 1</b>	Wall Thickness: <b>7mm</b>	Wall Colour/Material: <b>Black Astroboard</b>	Hardware Details: Piano hinged lid with stays. Recessed padlocking butterfly catches. Recessed sprung flip handles with rubber grips. Recessed extending handle. Steel corners + L-brackets. recessed 75mm corner castors.	Specifications: 1. Aluminium extrusions riveted through wall material every 100mm. 2. Bifurcated rivets to be used wherever possible. 3. All hardware zinc plated. 4. Internal surfaces lined with 6mm LD18 foam. 5. Movable 6mm ply partitions with Flexirail + foam fitted.	ALL DIMENSIONS IN MILLIMETRES 3rd ANGLE PROJECTION DO NOT SCALE	THIS DRAWING IS COPYRIGHTED BY DRAGON CASES. IT MUST NOT BE COPIED OR DISCLOSED WITHOUT CONSENT OF THE OWNER	 <b>DRAGON CASES</b> in partnership with Nomad PLC tel: 01633 791590 fax: 01633 791531
Title: <b>Rolling Flexi-Trunk 4</b>		Drawn by: J.B. Date: 03/11/2008	Company: <b>AN Other</b>					