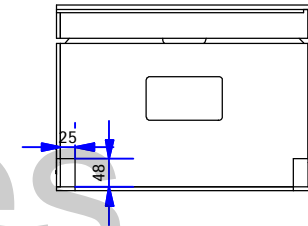
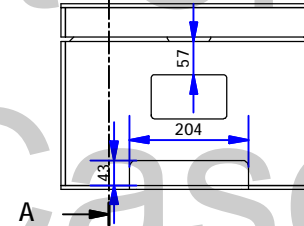
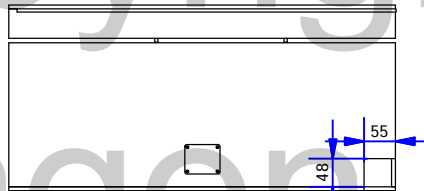
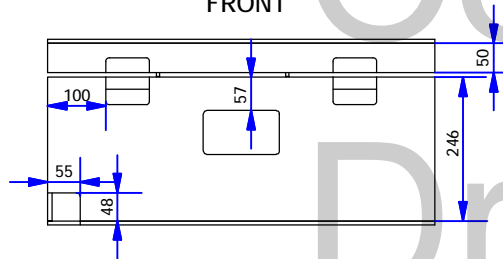


FRONT

Panel & Interior Details
BACK

RIGHT

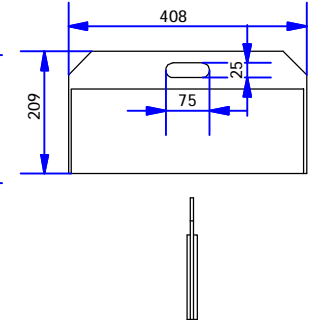
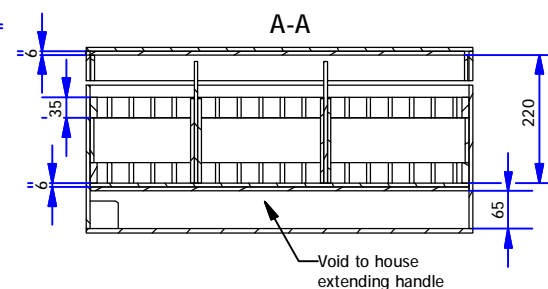
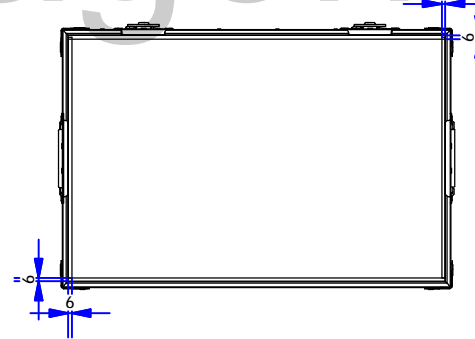
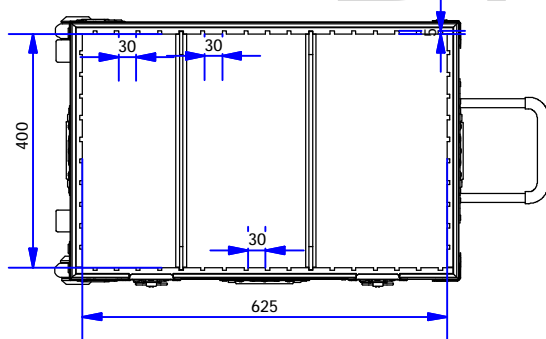
LEFT



Base Plan


Lid Plan

Moveable Partition



Void to house extending handle

External Dimensions (excluding hardware): 666L x 441W x 321H
Estimated Weight - 9.8kgs

Drawing no: FRFT2	Issue/Sheet 1 / 1	Wall Thickness: 7mm	Wall Colour/Material: Black Astroboard	Hardware Details: Piano hinged lid with stays. Recessed padlocking butterfly catches. Recessed sprung flip handles with rubber grips. Recessed extending handle. Steel corners + L-brackets. recessed 75mm corner castors.	Specifications: 1. Aluminium extrusions riveted through wall material every 100mm. 2. Bifurcated rivets to be used wherever possible. 3. All hardware zinc plated. 4. Internal surfaces lined with 6mm LD18 foam. 5. Movable 6mm ply partitions with Flexirail + foam fitted.	ALL DIMENSIONS IN MILLIMETRES 3rd ANGLE PROJECTION DO NOT SCALE	THIS DRAWING IS COPYRIGHTED BY DRAGON CASES. IT MUST NOT BE COPIED OR DISCLOSED WITHOUT CONSENT OF THE OWNER	 DRAGON CASES in partnership with Nomad PLC tel: 01633 791590 fax: 01633 791531
Title: Rolling Flexi-Trunk 2		Drawn by: J.B. Date: 03/11/2008	Company: AN Other					